

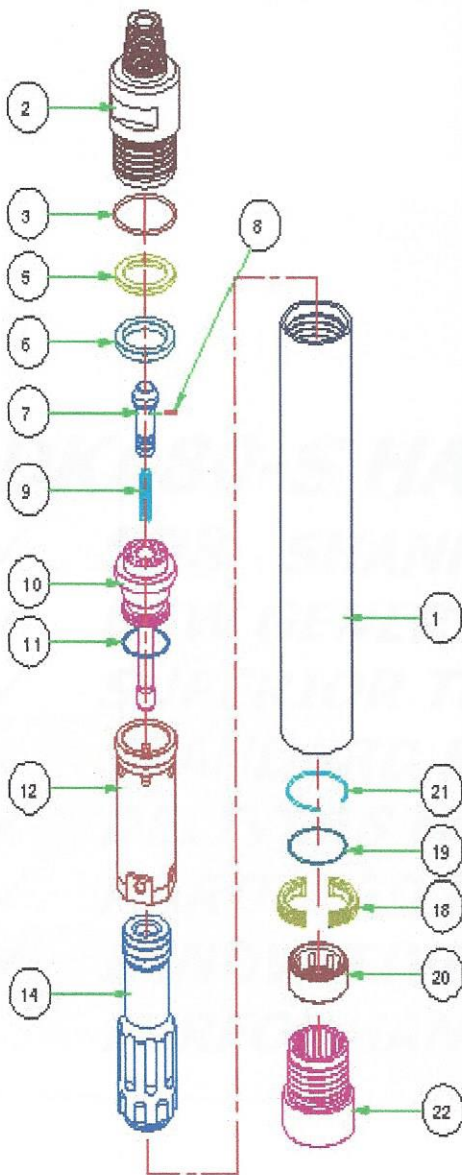
 **DrillKing**  
INTERNATIONAL



## ***DKA60-S HAMMER***

- ✓ ***SD6 SHANK DESIGN***
- ✓ ***NEW GENERATION***
- ✓ ***SUPERIOR TECHNOLOGY***
- ✓ ***STANDARD BIT DIAMETERS, 5.875"-6.750"***
- ✓ ***DELIVERS MORE ENERGY PER BLOW***
- ✓ ***HARDENED PISTON FOR EXTENDED LIFE***
- ✓ ***INNOVATIVE DESIGN FOR MAXIMUM PERFORMANCE WITH MINIMUM MAINTENANCE***

*The newest generation of Drill King Hammers means faster penetration, longer life, and less down time due to down hole failures.*



| No.                          | NOMENCLATURE         | Qty | Part Number      |
|------------------------------|----------------------|-----|------------------|
| <b>HAMMER ASSEMBLY (SD6)</b> |                      |     | <b>HADK-A60S</b> |
| 1                            | WEAR SLEEVE          | 1   | HPDK-A6001       |
| 2                            | TOP SUB              | 1   | HPDK-A6002       |
| 3                            | TOP SUB O-RING       | 1   | HPDK-A6003       |
| 5                            | SPRING WASHER        | 1   | HPDK-A6005       |
| 6                            | MAKE UP RING         | 1   | HPDK-A6006       |
| 7                            | CHECK VALVE          | 1   | HPDK-A6007       |
| 8                            | CHOKE SET            | 1   | HPDK-A6008       |
| 9                            | C.V. SPRING          | 1   | HPDK-A6009       |
| 10                           | AIR DISTRIBUTOR      | 1   | HPDK-A6010       |
| 11                           | AIR DIS. O-RING      | 1   | HPDK-A6011       |
| 12                           | CYLINDER             | 1   | HPDK-A6012       |
| 14                           | PISTON               | 1   | HPDK-A6014-S     |
| 18                           | BIT RET. RING        | 1   | HPDK-A6018-S     |
| 19                           | BIT RET. RING O-RING | 1   | HPDK-A6019       |
| 20                           | BIT BEARING          | 1   | HPDK-A6020-S     |
| 21                           | SNAP RING            | 1   | HPDK-A6021       |
| 22                           | DRIVE SUB            | 1   | HPDK-A6022-S     |

### Drilling Parameters

|                   |             |
|-------------------|-------------|
| Working Pressure  | 150-350     |
| Application Bit   | 5.87"-6.75" |
| Feed Force (lbs.) | 1,300-4,500 |

### Air Consumption at Different Working Pressures

|                |     |
|----------------|-----|
| 150 psi (scfm) | 435 |
| 250 psi (scfm) | 665 |
| 350 psi (scfm) | 900 |

### Dimensions & Weights

|                               |      |
|-------------------------------|------|
| <b>TOP SUB : 3.5" API PIN</b> |      |
| Tool Length (in)              | 48.5 |
| Outside Dia. (in)             | 5.59 |
| Piston Diameter (in)          | 4.43 |
| Stroke (in)                   | 4.00 |
| Weight w/o Bit (lbs)          | 209  |
| Piston Weight (lbs)           | 41.8 |



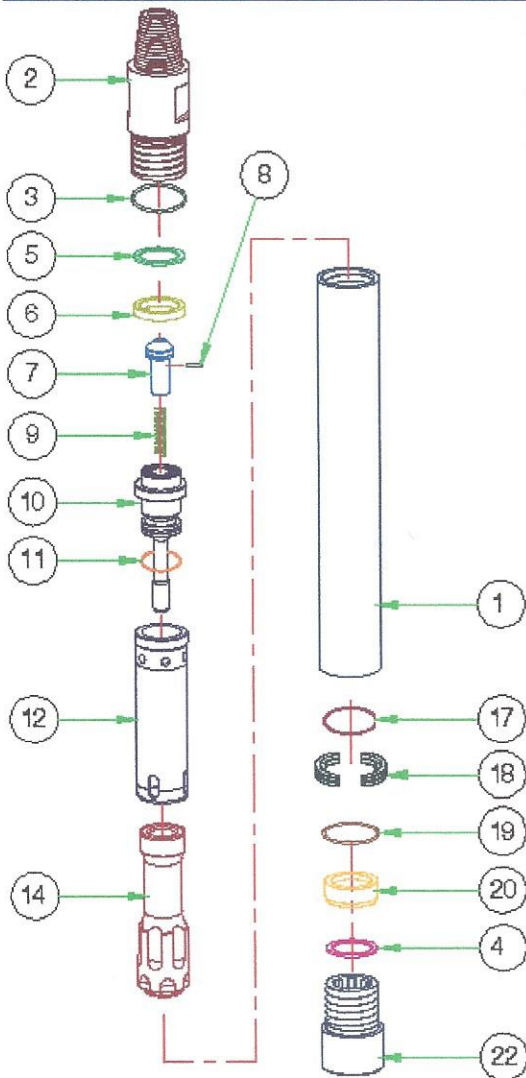
## ***DK1000-S HAMMER***

- ✓ ***SD10 SHANK DESIGN***
- ✓ ***NEW GENERATION***
- ✓ ***SUPERIOR TECHNOLOGY***
- ✓ ***STANDARD BIT DIAMETERS, 9.50"-14.00"***
- ✓ ***DELIVERS MORE ENERGY PER BLOW***
- ✓ ***HARDENED PISTON FOR EXTENDED LIFE***
- ✓ ***INNOVATIVE DESIGN FOR MAXIMUM PERFORMANCE WITH MINIMUM MAINTENANCE***

# DrillKing DK-1000-S

INTERNATIONAL

*The newest generation of Drill King Hammers means faster penetration, longer life, and less down time due to down hole failures.*



| No.                           | NOMENCLATURE         | Qty | Part Number         |
|-------------------------------|----------------------|-----|---------------------|
| <b>HAMMER ASSEMBLY (SD10)</b> |                      |     | <b>HADK-T1000-S</b> |
| 1                             | WEAR SLEEVE          | 1   | HPDK-T10001-S       |
| 2                             | TOP SUB              | 1   | HPDK-T10002-S       |
| 3                             | TOP SUB O-RING       | 1   | HPDK-T10003-S       |
| 4                             | WEAR WASHER (LOWER)  | 1   | HPDK-T10004-S       |
| 5                             | WEAR WASHER (UPPER)  | 1   | HPDK-T10005-S       |
| 6                             | MAKE UP RING         | 1   | HPDK-T10006-S       |
| 7                             | CHECK VALVE          | 1   | HPDK-T10007-S       |
| 8                             | CHOKE SET            | 1   | HPDK-T10008-S       |
| 9                             | C.V. SPRING          | 1   | HPDK-T10009-S       |
| 10                            | AIR DISTRIBUTOR      | 1   | HPDK-T10010-S       |
| 11                            | AIR DIS. O-RING      | 1   | HPDK-T10011-S       |
| 12                            | CYLINDER             | 1   | HPDK-T10012-S       |
| 14                            | PISTON               | 1   | HPDK-T10014-S       |
| 17                            | PISTON RET. RING     | 1   | HPDK-T10017-S       |
| 18                            | BIT RET. RING        | 1   | HPDK-T10018-S       |
| 19                            | BIT RET. RING O-RING | 1   | HPDK-T10019-S       |
| 20                            | BEARING              | 1   | HPDK-T10020-S       |
| 22                            | CHUCK                | 1   | HPDK-T10022-S       |

| Drilling Parameters |              |
|---------------------|--------------|
| Working Pressure    | 150-250      |
| Application Bit     | 9.50"-14.00" |
| Feed Force (lbs.)   | 3,500-7,000  |

| Air Consumption at Different Working Pressures |      |
|--|------|
| 150 psi (scfm)                                 | 690  |
| 200 psi (scfm)                                 | 980  |
| 250 psi (scfm)                                 | 1290 |

| Dimensions & Weights           |      |
|--------------------------------|------|
| <b>TOP SUB : 6.58" API PIN</b> |      |
| Tool Length (in)               | 59.6 |
| Outside Dia. (in)              | 8.86 |
| Piston Diameter (in)           | 6.85 |
| Stroke (in)                    | 3.90 |
| Weight w/o Bit (lbs)           | 772  |
| Piston Weight (lbs)            | 117  |

Nothing contained in this brochure is intended to extend any warranty or representation for applications expressed or implied, regarding the products described herein. Any such warranties or other terms and conditions of sale of products shall be in accordance with Drill King's standard terms and conditions of sale for such products, which are available upon request.



## ***DKT120-S HAMMER***

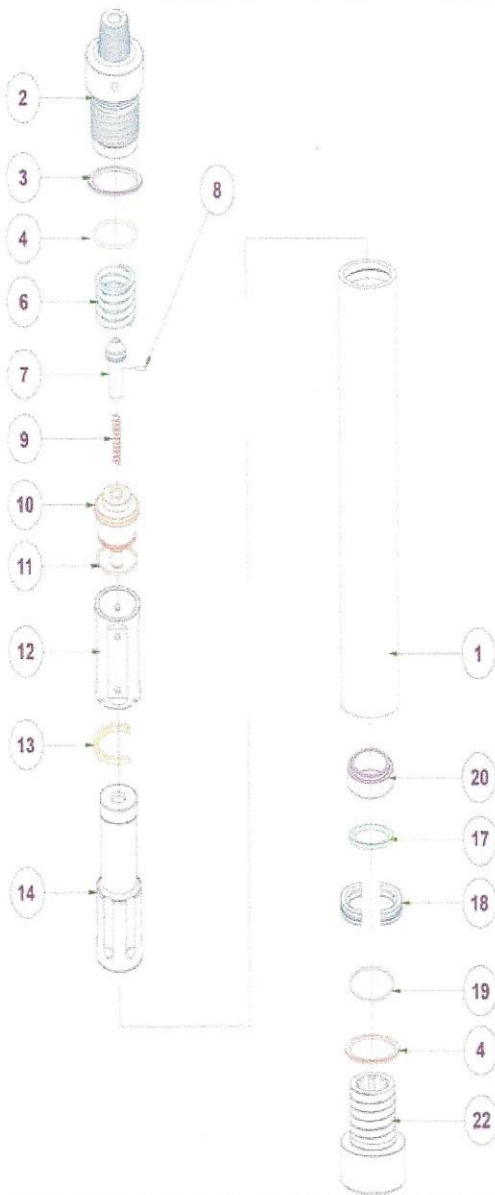
- ✓ ***SD12 SHANK DESIGN***
- ✓ ***SUPERIOR TECHNOLOGY***
- ✓ ***STD BIT DIAMETER RANGE : 11-7/8"-15"***
- ✓ ***DELIVERS MORE ENERGY PER BLOW***
- ✓ ***HARDENED PISTON FOR EXTENDED LIFE***
- ✓ ***INNOVATIVE DESIGN FOR MAXIMUM PERFORMANCE WITH MINIMUM MAINTENANCE***



# DK-T120S

INTERNATIONAL

*The newest generation of Drill King Hammers means faster penetration, longer life, and less down time due to down hole failures.*



No. NOMENCLATURE Qty Part Number

**HAMMER ASSEMBLY (SD12)**

**HADK-T120S**

|    |                      |   |             |
|----|----------------------|---|-------------|
| 1  | WEAR SLEEVE          | 1 | HPDK-T12001 |
| 2  | TOP SUB              | 1 | HPDK-T12002 |
| 3  | TOP SUB O-RING       | 1 | HPDK-T12003 |
| 4  | WEAR WASHER          | 2 | HPDK-T12004 |
| 6  | SPRING               | 1 | HPDK-T12006 |
| 7  | CHECK VALVE          | 1 | HPDK-T12007 |
| 8  | CHOKE SET            | 1 | HPDK-T12008 |
| 9  | C.V. SPRING          | 1 | HPDK-T12009 |
| 10 | AIR DISTRIBUTOR      | 1 | HPDK-T12010 |
| 11 | AIR DIST. O-RING     | 1 | HPDK-T12011 |
| 12 | CYLINDER             | 1 | HPDK-T12012 |
| 13 | CYL RET RING         | 1 | HPDK-T12013 |
| 14 | PISTON               | 1 | HPDK-T12014 |
| 17 | PISTON RET. RING     | 1 | HPDK-T12017 |
| 18 | BIT RET. RING        | 1 | HPDK-T12018 |
| 19 | BIT RET. RING O-RING | 1 | HPDK-T12019 |
| 20 | BEARING              | 1 | HPDK-T12020 |
| 22 | DRIVE SUB IR112      | 1 | HPDK-T12022 |

### Drilling Parameters

|                   |               |
|-------------------|---------------|
| Working Pressure  | 150-250       |
| Application Bit   | 11-7/8-15"    |
| Feed Force (lbs.) | 4,500 - 8,000 |

### Air Consumption at Different Working Pressures

|                |      |
|----------------|------|
| 150 psi (scfm) | 880  |
| 200 psi (scfm) | 1250 |
| 250 psi (scfm) | 1700 |

### Dimensions & Weights

|                         |      |
|-------------------------|------|
| TOP SUB : 6.58" API PIN |      |
| Tool Length (in)        | 71.4 |
| Outside Dia. (in)       | 10.8 |
| Weight w/o Bit (lbs)    | 1433 |
| Piston Weight (lbs)     | 215  |

Nothing contained in this brochure is intended to extend any warranty or representation for applications expressed or implied, regarding the products described herein. Any such warranties or other terms and conditions of sale of products shall be in accordance with Drill King's standard terms and conditions of sale for such products, which are available upon request.